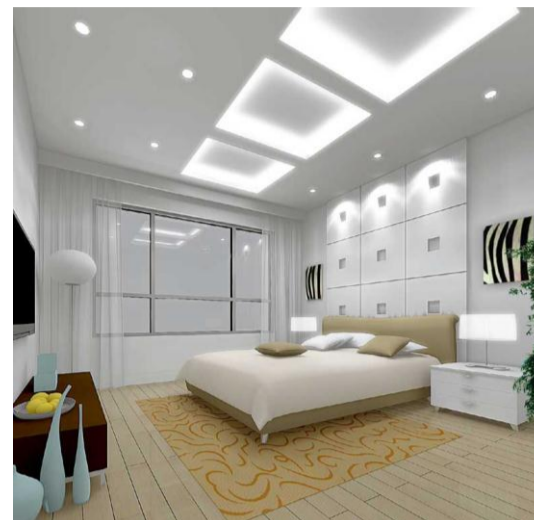




**Features:**

- Extensive indoor LED applications
- Constant Current Design (CC mode)
- Design meets EN60950 and UL8750
- 100% Burn-in Test during production
- High Reliability
- Long Life



MODEL	XEL-XCB40 Series					
Working methods	Isolated					
Suitable for	LED Bulb with Built-in Power					
Input Voltage	AC90-265V	AC90-265V	AC90-265V	AC180-265V	AC180-265V	AC180-265V
Input Frequency Range	47-63Hz					
*PFC Function	PF $\geq$ 0.55	PF $\geq$ 0.55	PF $\geq$ 0.55	PF $\geq$ 0.55	PF $\geq$ 0.95	PF $\geq$ 0.95
Efficiency	$\geq$ 79%	$\geq$ 80%	$\geq$ 82%	$\geq$ 82%	$\geq$ 85%	$\geq$ 85%
Output DC Voltage	9-14V	9-14.5V	15-22V	15-22V	21-26V	9-14V
Output Current (Variable Range: $\pm$ 5%)	250mA	350mA	450mA	120mA	180mA	230mA
Output Power	3x1W	4x1W	5x1W	6x1W	7x1W	3x3W
Protection	OVP	O	O	O	O	O
	SCP	O	O	O	O	O
EMC Standard	EN55015					
Safety Standard	EN60950 UL8750					
**Life	18,000Hrs					
DIMENSION	27*18*13mm(L*W*H)/53*22*18(L*W*H)					

Remarks:"O" in the protection means available.