



Product Highlights:

- Designed for LED lighting and signage applications
- Universal AC input (100~305VAC)
- Built-in active PFC provide PF>0.9 over entire input range
- Class 2 power supply
- Convection cooled, plastic, UL94V0 case
 - -40°C ~ +70°C ambient, Tcase <= 90°C
- Protection: Short circuit/Over voltage
 - Automatic over-temperature current foldback
- Class A Noise Rating
- DC 12V Auxiliary output (Optional)
- Dimmable output with flexible architecture (Optional)
 - DC Dimming (0-10V)
- 5 year warranty



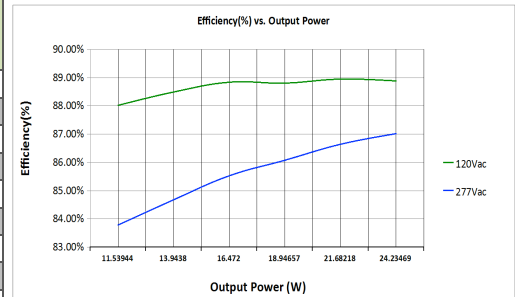
Compliance:

- RoHS Compliant
- UL8750, CAN/CSA-C22.2 No. 250.13-12 , Class 2 Output
- UL1310/CSA22.2 No.223 (<42V output).
- FCC Part 15 Class B and EN55015 Compliant
- IP66 - Suitable for indoor or outdoor applications in dry, damp and wet locations

Orderable Part Numbers

Constant Current Variants

Part Number ^{*1, *2}	Maximum Output Current (mA)	Output Voltage Range (V)	Maximum Efficiency	Maximum Output Power (W)
XEL-A025B-024-C1X40-ZA01	1400	8 ~ 18	83%	25
XEL-A025B-024-C1X25-ZA01	1250	12 ~ 20	83%	25
XEL-A025B-024-C1X05-ZA01	1050	15 ~ 24	85%	25
XEL-A025B-042-CX800-ZA01	800	20 ~ 30	85%	25
XEL-A025B-042-CX700-ZA01	700	25 ~ 36	86%	25
XEL-A025B-042-CX600-ZA01	600	30 ~ 42	86%	25
XEL-A025B-042-CX550-ZA01	550	30~42	86%	25
XEL-A025B-056-CX500-ZA01	500	36 ~ 48 ^{*3}	87%	25
XEL-A025B-056-CX450-ZA01	450	40 ~ 56 ^{*3}	87%	25
XEL-A025B-056-CX350-ZA01	350	40 ~ 56 ^{*3}	88%	20



*1) Non-dimmable variant may be ordered by replacing -ZA01 with -NA01, with dimmable and DC 12V Auxiliary output variant may be ordered by replacing -ZA01 with -PA01

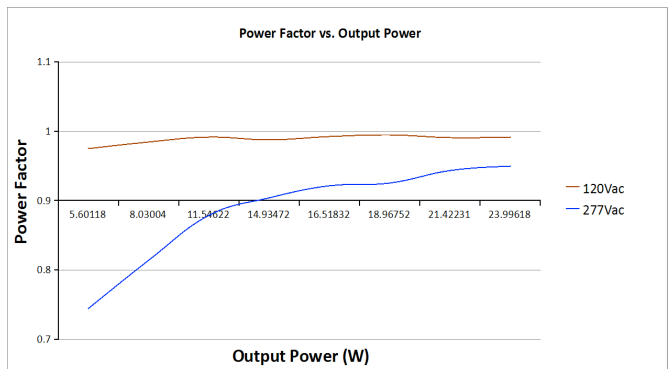
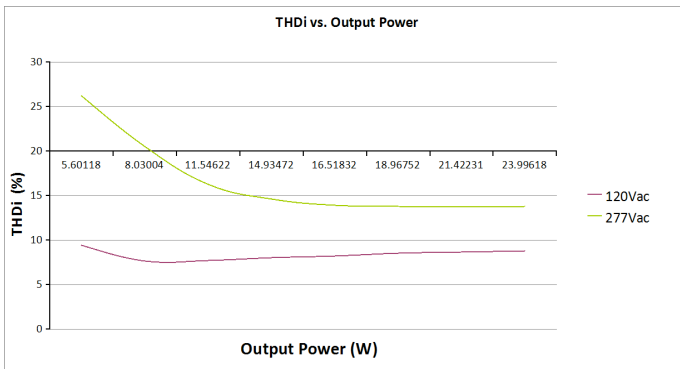
*2) If the variant you need is not listed, please contact Xenerqi (Sales@Xenerqi.com) to discuss our "Quick-Custom" optimized solutions

*3) Units with output voltage >42V are not CSA C22.2 No.223 (Class-2 Canada) compliant at the driver level but may qualify for fixture level compliance

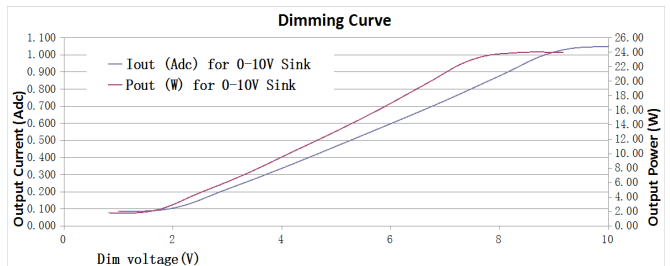
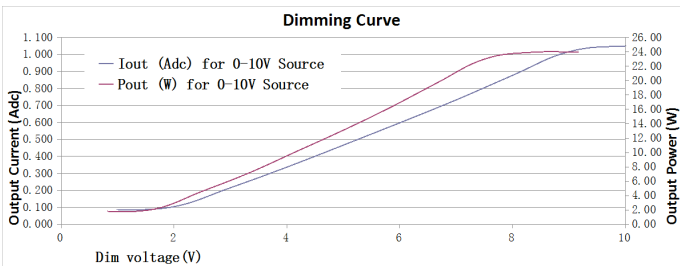
SERIES	XL-A025B	
OUTPUT	DC VOLTAGE RANGE	8 ~ 56Vdc (see orderable parts table for details)
	RATED CURRENT RANGE	0.35A to 1.40A (see orderable parts table for details)
	RATED POWER	25W (see orderable parts table for details)
	LOAD REGULATION ¹	±5%
	TURN ON TIME	< 1S, (10% - 100% dimming)
	DC 12V Auxiliary output	12Vdc±5%, 25mA
INPUT	VOLTAGE RANGE	100 ~ 305Vac
	FREQUENCY RANGE	47 - 63Hz
	POWER FACTOR (Typ.)	PFC >0.90, >= 70% Rated Power, 120-277VAC Input
	THD (TOTAL HARMONIC DIST.)	- Compliance to EN61000-3-2 Class C Standards - THD ≤ 20%, >= 70% Rated Power, 120-277VAC Input
	EFFICIENCY (Typ.)	≥ 82% , >= 80% Rated Power, 120-277VAC Input
	AC INPUT CURRENT (Max.)	0.35A @ 120VAC, 0. 20A @ 277VAC
	INRUSH CURRENT (Typ.)	15A @ 120VAC, 20A @ 277VAC, <10msec duration, Cold start at 25°C
	LEAKAGE CURRENT	<500µA (400µA typical)
DIMMING	MODES	0-10 VDC, Sinking and Sourcing (See dimming curve)
PROTECTION	SHORT CIRCUIT	Hiccup mode protection. Recovers automatically after fault condition is removed
	OVER VOLTAGE	The driver would cut off output current if Vf is greater than No-load output voltage. Recovers automatically after fault condition is removed.
	OVER TEMPERATURE	Automatic fold-back, Tc >90°C (-0/+5C). Output reduced in steps from 100% to 15%. Auto-recovery, Tc <80C (+0, -5C). *Note, thermal mass of LED driver may delay recovery. *Supplemental hardware shutdown protection provided for unexpected thermal events.

General Specifications

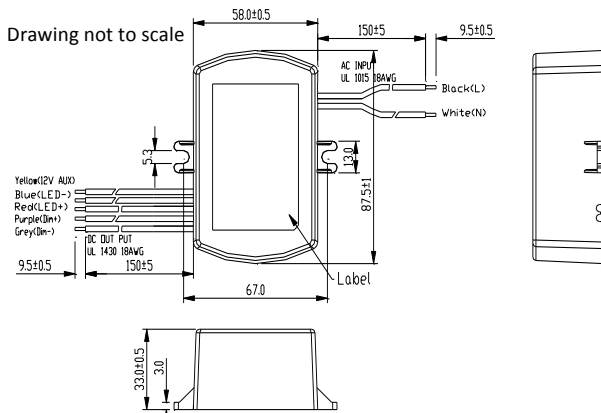
ENVIRONMENT	WORKING TEMPERATURE	Tambient: -40°C ~ +70°C Tcase: ≤ 90°C
	WORKING HUMIDITY	5% ~ 95% RH non-condensing
	STORAGE TEMPERATURE	-40°C ~ + 85°C ambient
	STORAGE HUMIDITY	5% ~ 95% RH non-condensing
	Waterproof Rating	IP66 Compliant
	IMPACT RESISTANCE	1 g/s
	VIBRATION	5-55Hz/2g, 30 minutes
SAFETY & EMC	SAFETY STANDARDS	UL8750, CAN/CSA-C22.2 No. 250.13-12, UL1310, CSA22.2 No. 223 (<42V output)
	EMI CONDUCTION & RADIATION	FCC Part 15 Class B and EN55015 Compliant
	HARMONIC CURRENT	Compliance to GB4343-2003+A1, CISPR 14-1:EN61000-3-2:1995
	EMS IMMUNITY	Compliance to GB/T13926.3, IEC61000-4-3 & 4-4, PrEN55014-2 Section 6.2 & 6.5, IEC61000-4-11.
	TRANSIENT SUPPRESSION	IEC61000-4-5 LEVEL 4 (4kV/2.5kV L-N) 2.5kV (100kHz ring wave at 2.5kV common mode and differential)
RELIABILITY	DESIGN LIFETIME	50,000 hours @ Tcase ≤ 90°C



Dimming graph: (24V/1.05A)



Mechanical Details



Wires	Colors	Type
Input	White (Neutral)	UL1015
	Black (Line)	AWG18
Output	Red (LED+)	UL1430
	Blue(LED-)	AWG18
Dimming (optional)	Yellow(+12V AUX)	UL1430
	Purple (Dim+)	UL1430
	Grey (Dim-)	AWG18
Case		
Material	Black/White PC, PBT, PPO, Plastic	
Unit Weight	260g	
Dimensions	87.5mm (L) x 58.0mm (W) x 33.0mm (H)	

Xenerqi Limited

Email: Sales@Xenerqi.com

www.xenerqi.com

Phone: +1 (704) 746-9246

+ (852) 3050-9292

+ (65) 6494-8832

The information and specifications contained in this summary sheet are believed to be accurate and reliable at the time of publication, however XenerQi Limited assumes no responsibility for damages caused due to potential errors. Also, XenerQi Limited assumes no responsibility for the use of this product in such way that it infringes on patents or other rights of third parties. No license is granted by implication or otherwise under any patent or patent rights of Xenerqi Limited. Specifications are subject to change without notice.